



COMMUNITY DEVELOPMENT





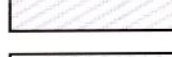
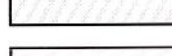
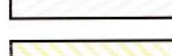
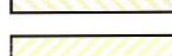
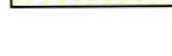
SPECIAL PLACES PROGRAM

FINAL STATUS - July 24, 2001

Scale 1 : 1 000 000

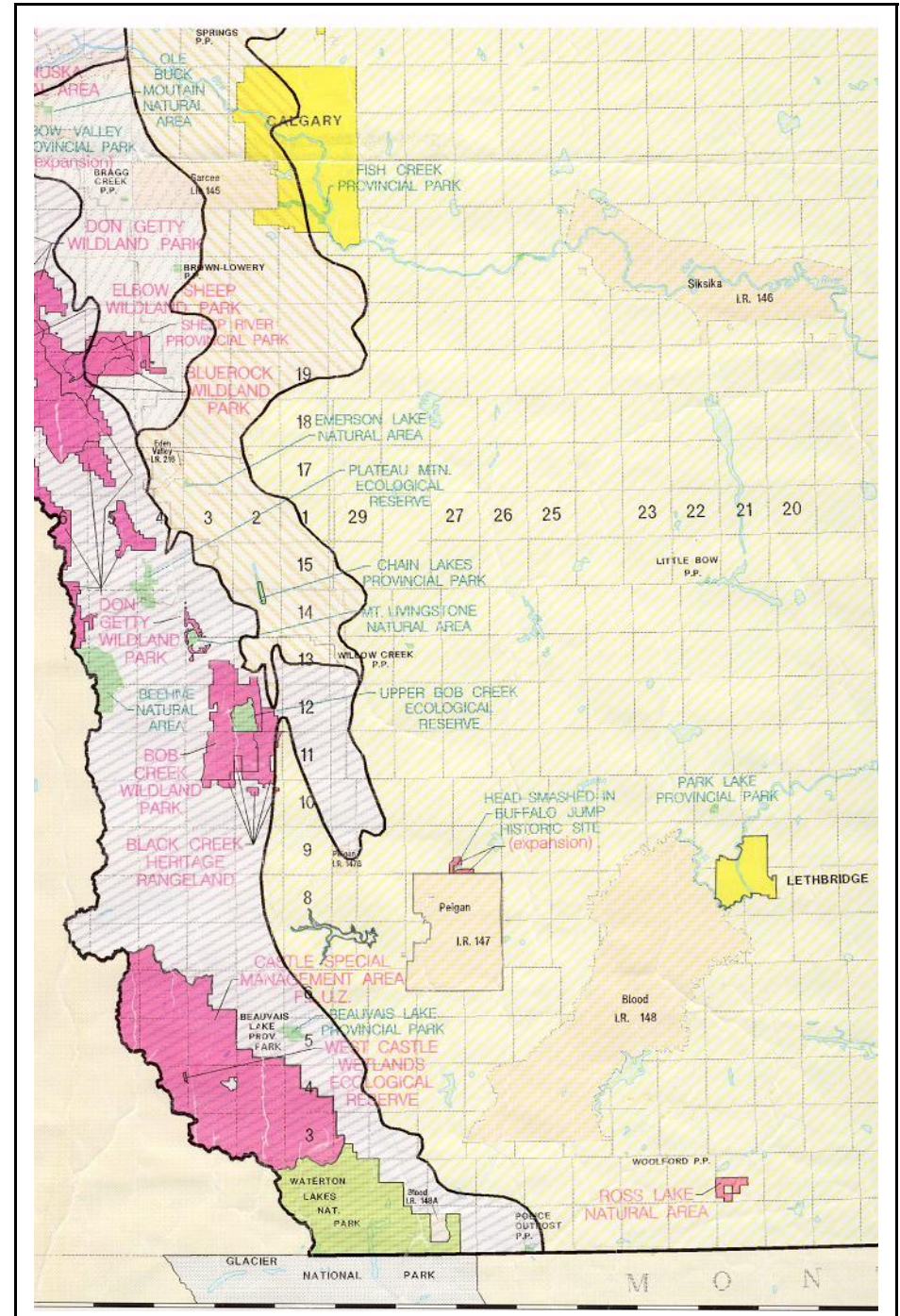
The Special Places program concluded on July 24, 2001. This map therefore is the FINAL map in the series of maps produced to provide the status of the Special Places program. The map identifies the protected areas (eg. Provincial Parks, Wildland Provincial Parks, Ecological Reserves, and Natural Areas) designated under the Special Places program. This map is intended for display purposes only and should not be used for analysis.

For information on the Special Places program visit the Parks and Protected Areas website at <http://www.cd.gov.ab.ca/preserving/parks/index.asp> and link to the Special Places site. A map of all the protected areas in Alberta can be downloaded from the Parks and Protected Areas website by linking to the Land Reference Manual at <http://www.gov.ab.ca/env/parks/lrm/index.html>.

-  Protected Areas Designated Under the Special Places Program
-  Provincial Protected Areas
-  National Protected Areas
-  Boreal Forest Natural Region
-  Rocky Mountain Natural Region
-  Foothills Natural Region
-  Canadian Shield Natural Region
-  Parkland Natural Region
-  Grassland Natural Region

BASE MAP DATA PROVIDED BY SPATIAL DATA WAREHOUSE LTD.
PRODUCED BY RESOURCE DATA, PUBLIC LANDS DIVISION, ASRD
PRODUCED OCTOBER 2001

Excerpt from Alberta Government map showing Castle Special Place (Castle Special Management Forest Land Use Zone)



NOTE: Scale on this excerpt is smaller than the 1:1,000,000 listed on the map key.